

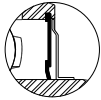
UEFB 200 SERIES

Normal-Duty 3-Bolt Flange Bracket
Tru-Loc
(Metric-Based Housing)

TURNER

Mounted Bearings

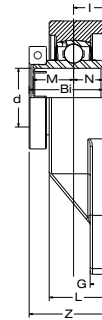
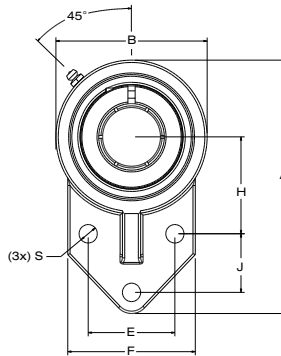
Available Seal Styles:



Standard



L3



Bearing Number	Shaft Dia.	Dimensions in. mm.													Bolt Used	Load Rating lbs. kN.		Bearing Insert	Housing Number	Weight lbs. kg.																			
	d in. mm.	A	H	E	J	I	G	L	S	B	F	Z	Bi	N		M	in. mm.				Dynamic C _r	Static C _{0r}																	
UEFB 204-12	3/4	4.33	1.65	1.26	1.06	0.59	0.51	1.00	0.39	2.44	2.05	1.38	1.2992	0.5000	0.7205	5/16	2,883	1,496	UE 204-12	FB 204	1.5																		
UEFB 204	20	110.0	42.0	32.0	27.0	15.0	13.0	25.5	10.0	62.0	52.0	35.3	33.0	12.7	18.3	M8	12.82	6.65	UE 204		0.7																		
UEFB 205-14	7/8	5.12	1.97	1.58	1.14	0.71	0.51	1.22	0.39	3.07	2.56	1.66	1.5669	0.6260	0.8740	5/16	4,377	2,569	UE 205-14	FB 205	1.8																		
UEFB 205-15	15/16																		4.57		1.77	1.34	1.06	0.63	0.51	1.06	0.39	2.68	2.20	1.47	1.3937	0.5630	0.7795	5/16	3,155	1,810	UE 205-15	0.8	
UEFB 205	25																		116.0		45.0	34.0	27.0	16.0	13.0	27.0	10.0	68.0	56.0	37.1	35.4	14.3	19.8	M8	14.03	8.05	UE 205		
UEFB 205-16	1																																				UE 205-16		
UEFB 206-17	1 1/16	5.12	1.97	1.58	1.14	0.71	0.51	1.22	0.39	3.07	2.56	1.66	1.5669	0.6260	0.8740	5/16	4,377	2,569	UE 206-17	FB 206	2.2																		
UEFB 206-18	1 1/8																																				UE 206-18		
UEFB 206	30																		130.0			50.0	40.0	29.0	18.0	13.0	31.0	10.0	78.0	65.0	41.9	39.8	15.9	22.2	M8	19.47	11.43	UE 206	1.0
UEFB 206-19	1 3/16																																					UE 206-19	
UEFB 206-20	1 1/4																																					UE 206-20	
UEFB 207-20	1 1/4	5.67	2.17	1.81	1.26	0.75	0.59	1.34	0.39	3.54	2.76	1.78	1.7283	0.6890	1.0000	5/16	5,775	3,497	UE 207-20	FB 207	3.3																		
UEFB 207-21	1 5/16																																				UE 207-21		
UEFB 207-22	1 3/8																		144.0			55.0	46.0	32.0	19.0	15.0	34.0	10.0	90.0	70.0	45.4	43.9	17.5	25.4	M8	25.69	15.56	UE 207-22	1.5
UEFB 207	35																																					UE 207	
UEFB 207-23	1 7/16																																					UE 207-23	
UEFB 208-24	1 1/2	6.46	2.36	1.97	1.61	0.83	0.63	1.42	0.47	3.94	3.07	2.06	1.9764	0.7480	1.1890	3/8	6,634	4,079	UE 208-24	FB 208	4.2																		
UEFB 208-25	1 9/16																		164.0			60.0	50.0	41.0	21.0	16.0	36.0	12.0	100.0	78.0	52.2	50.2	19.0	30.2	M10	29.51	18.14	UE 208-25	1.9
UEFB 208	40																																					UE 208	
UEFB 209-26	1 5/8	6.85	2.56	2.13	1.69	0.87	0.71	1.50	0.47	4.17	3.15	2.09	1.9764	0.7480	1.1890	3/8	7,160	4,676	UE 209-26	FB 209	4.6																		
UEFB 209-27	1 11/16																																					UE 209-27	
UEFB 209-28	1 3/4																		174.0			65.0	54.0	43.0	22.0	18.0	38.0	12.0	106.0	80.0	53.2	50.2	19.0	30.2	M10	31.85	20.80	UE 209-28	2.1
UEFB 209	45																																					UE 209	
UEFB 210-30	1 7/8	7.24	2.68	2.28	1.81	0.87	0.71	1.57	0.47	4.41	3.39	2.19	2.0709	0.7480	1.2835	3/8	7,867	5,330	UE 210-30	FB 210	5.3																		
UEFB 210-31	1 15/16																																					UE 210-31	
UEFB 210	50																		184.0			68.0	58.0	46.0	22.0	18.0	40.0	12.0	112.0	86.0	55.6	52.6	19.0	32.6	M10	35.00	23.71	UE 210	2.4
UEFB 210-32	2																																					UE 210-32	